

Authorizing BuildersCAD Using a Rainbow USB or Parallel Port Key

The standard authorization process for **BuildersCAD** uses a Rainbow USB Superpro hardware key device. This key is supported on all Windows operating systems which support USB (Universal Serial Bus).

Users who have had previous versions of **BuildersCAD** may also have a Rainbow Superpro or C-Plus-B Parallel port key.

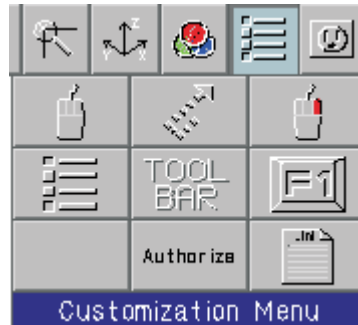
Installing the Sentinel Driver

The first step to authorizing **BuildersCAD** is to install the driver for the Rainbow Sentinel key. Note that the Rainbow Sentinel Driver must be installed, **BEFORE** a USB key is installed on the computer.

! WARNING: DO NOT INSTALL A USB KEY ON A USB PORT UNTIL AFTER THE DRIVER HAS BEEN PROPERLY INSTALLED. !

To install the Rainbow Sentinel Key Driver:

1. Within **BuildersCAD**, open the **BuildersCAD Authorization Manager** Menu. This menu is found by selecting the Customization icon on the **Desktop** menu, then selecting the Authorize button on the **Customization** pull down menu. The **Authorization Manager** Menu may also be found by selecting Help on the **Windows Menu Bar** and then Authorize **BuildersCAD** on the pull down menu.



2. Select the Install Key Driver button in the Host Identification Data portion of the **BuildersCAD Authorization Manager** menu.

3. The install shield program will run the key driver installation. Follow the prompts to install the driver.

You can also access the key driver directly using Windows Explorer by navigating to your **BuildersCAD** installation directory. The key driver is found in the \perms\rainbow directory and is named RBDriver.exe. Double click on the driver executable to run the driver install.

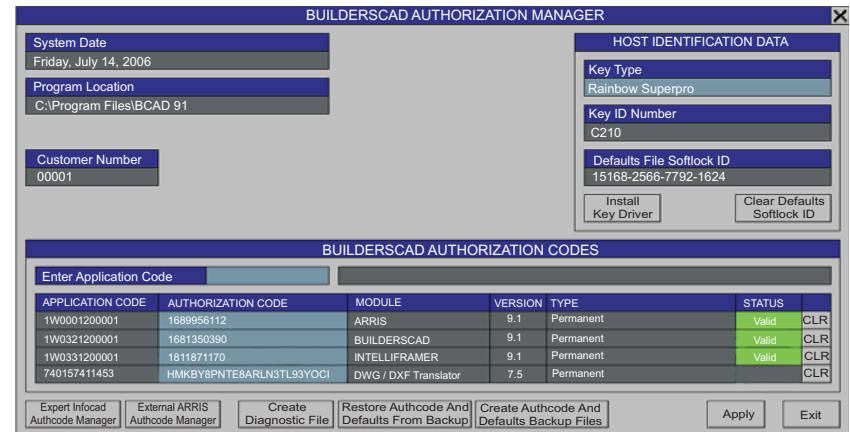
ONLY AFTER THE DRIVER IS INSTALLED, install the USB key to any USB port on your computer. It is not necessary to turn off the computer when plugging in a USB key. The first time the key is installed, Windows “Plug and Play” will recognize the key and pop up a message that it is activating the driver. For Parallel Port keys, turn the computer off, install the key to the parallel port, and then restart your computer.



Authorizing BuildersCAD

Start **BuildersCAD**. Note that **BuildersCAD** is not yet authorized and so it will start in Demonstration Mode.

Within **BuildersCAD**, open the **BuildersCAD Authorization Manager** Menu. This menu is found by selecting the Customization icon on the **Desktop** menu, then selecting the Authorize button on the **Customization** pull down menu. The **Authorization Manager** Menu may also be found by selecting Help on the **Windows Menu Bar** and then Authorize **BuildersCAD** on the pull down menu.



In the Host Identification Data portion of the menu, select the type of key that you are using. The default is Rainbow Superpro, which includes all USB keys and Superpro parallel port keys. For older Rainbow C-Plus-B parallel port keys (C-Plus-B is embossed in the plastic of the key) select Rainbow C-Plus-B. The key number will display in the box below the key type. Be sure that this number matches the number on your key.

Authorizing BuildersCAD Using a Rainbow USB or Parallel Port Key

Sigma Design provides a *Product Authorization* form containing the *Application Code* and *Authorization Code* for each licensed key number. Be sure that the codes that you enter match the ones for the key number on your computer.

Click on the box next to the Enter Application Code title under the ARRIS AUTHORIZATION CODES section of the menu, and enter your Base ARRIS Application Code. This code is a number followed by a "W" followed by a 10 digit number. When this code is entered, **BuildersCAD** will display it in the first line of the **BuildersCAD AUTHORIZATION CODES** list below, along with information about the type of Authorization. The AUTHORIZATION CODE box next to the Application code will highlight and **BuildersCAD** will prompt for this code. The base ARRIS Authorization code is a 10 digit number. Enter this number. **BuildersCAD** will report if the authorization is valid. Repeat the process for the BuildersCAD codes and the Intelliframer codes if you have purchased this module.

If other authorizations for 3rd party products such as the DWG/DXF Translator are to be entered, follow the same process as above. When all codes have been entered, Click the APPLY button on the **BUILDERSCAD AUTHORIZATION MANAGER** menu. **BuildersCAD** is now authorized and ready to go!



Updated July 14, 2006

Potential Problem using a USB key on Windows 98:

If you plug the USB key in before installing the key driver, or if you have plugged other devices into the USB port, Windows 98 may have attempted to install a system driver for the USB port that will not work with the Sentinel USB key. If after executing RBDriver.exe, the Authcode Manager still does not recognize the USB key, you need to manually reinstall the Rainbow Sentinel Driver by following these steps:

1. Select the Windows Start->Settings->Control Panel
2. On the Control Panel, double click the System icon and select the Device Manager tab.
3. Scan down the list of devices until you find the USB controllers. They may be called the Unversal Serial Bus controllers.
4. Look for an exclamation mark or question mark with the USB controllers.
5. If either an exclamation mark or question mark is found, select it with the right mouse button and select the option to reinstall the USB driver.